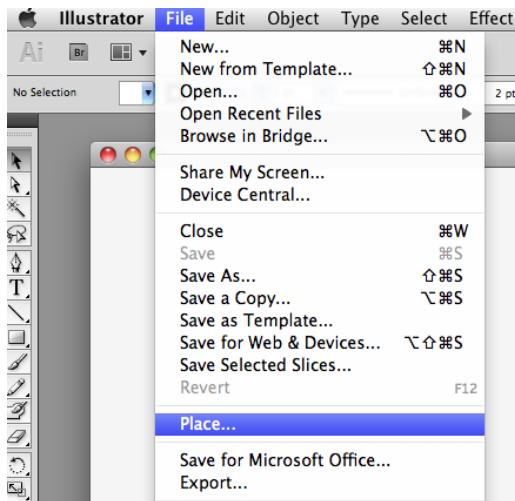


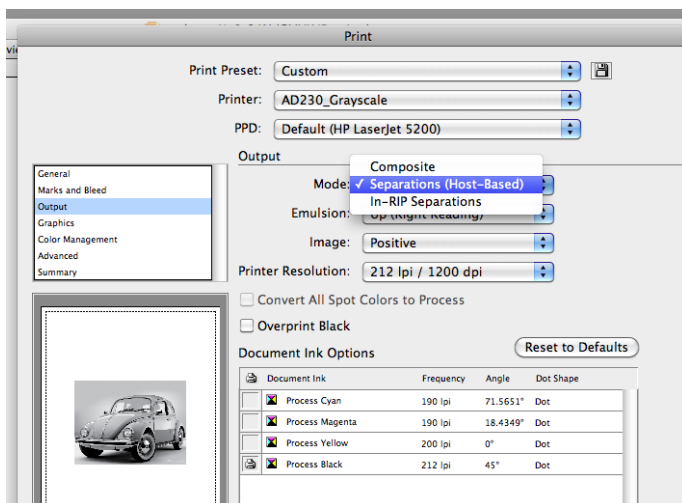
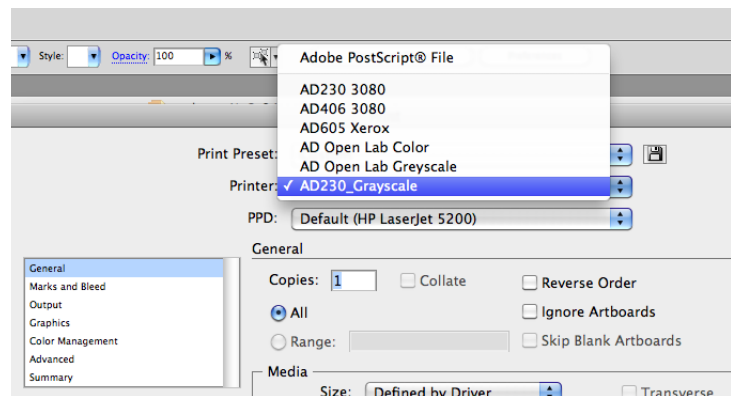
Printing Black and White Halftones to the AD230 Grayscale

To print halftones you must print to the AD230 grayscale printer using Adobe Illustrator. The screen function was eliminated from Photoshop in CS5 (Thanks Adobe). You will be printing directly to the printer without the intervention of the Go Print Server. You do not need to convert your file to a pdf.



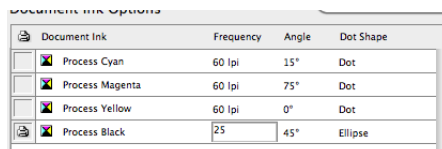
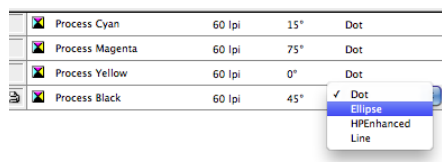
Convert file to grayscale in Image/Mode in Photoshop.

Open up a new file in Illustrator. Under File menu use the Place function to bring in your image. Go to the print menu. Select AD230 Grayscale from the drop down menu. Select the appropriate size of paper from the Media menu.



If you wish to have some sort of registration marks go to the marks and bleeds menu and choose the desired marks.

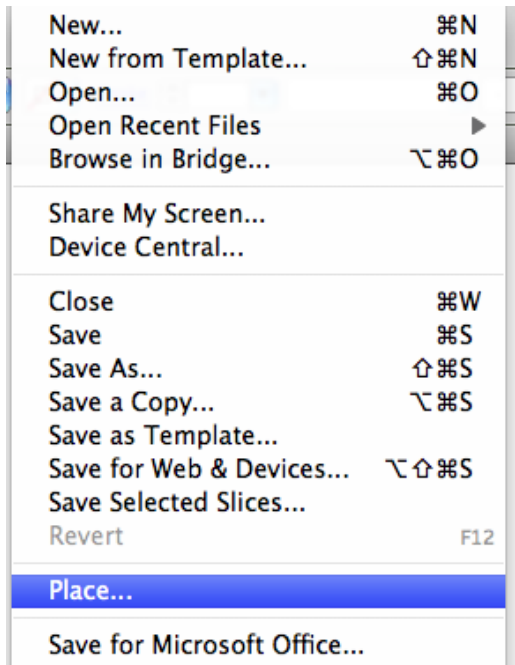
Click on the output option to access halftone settings. In the mode menu choose Separations (Host-Based). You will see settings for each color. For a one-color image you will print the Black channel. Make the desired changes to the lpi and dot shape. Do not change the screen angle.



Hit the print button. Go to the desk and have the student worker put the appropriate size paper in the printer tray. Student worker will handle payment for the print(s).

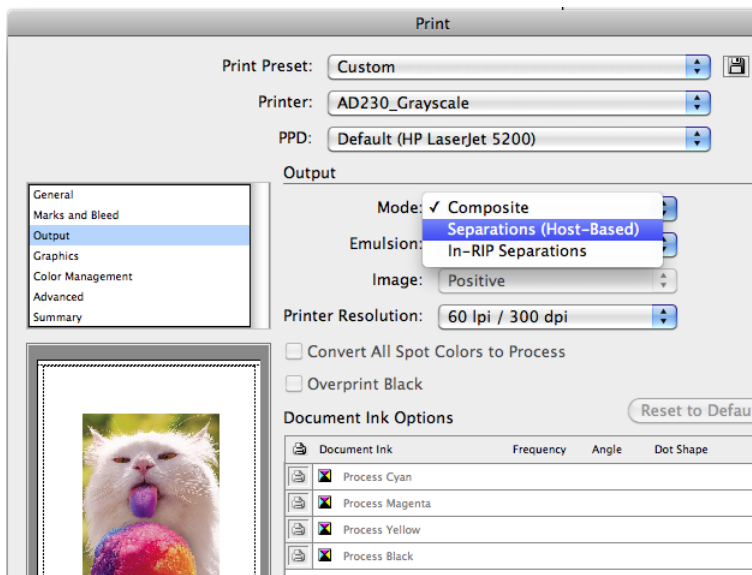
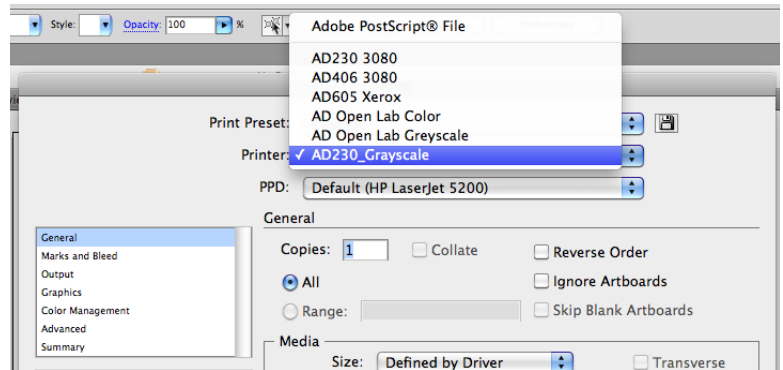
Printing 4 Color Separations to the AD230 Grayscale

To print halftones you must print to the AD230 grayscale printer using Adobe Illustrator. The screen function was eliminated from Photoshop in CS5 (Thanks Adobe). You will be printing directly to the printer without the intervention of the Go Print Server. You do not need to convert your file to a pdf.



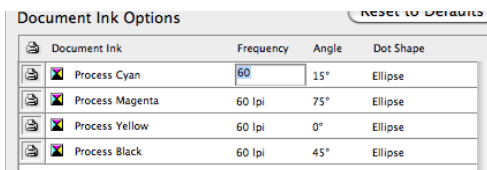
Convert file to CMYK in Photoshop.

Open up a new file in Illustrator. Under File menu use the Place function to bring in your image. Go to the print menu. Select AD230 Grayscale from the drop down menu. Select the appropriate size of paper from the Media menu.



If you wish to have some sort of registration marks go to the marks and bleeds menu and choose the desired marks. You will probably want to use page information for 4-color separations.

Click on the output option to access halftone settings. In the mode menu choose Separations (Host-Based). You will see settings for each color. For a 4-color image you will print all four channels. Make the desired changes to the lpi and dot shape for each channel. Do not change the screen angles.



Hit the print button. Go to the desk and have the student worker put the appropriate size paper in the printer tray. Student worker will handle payment for the print(s).

