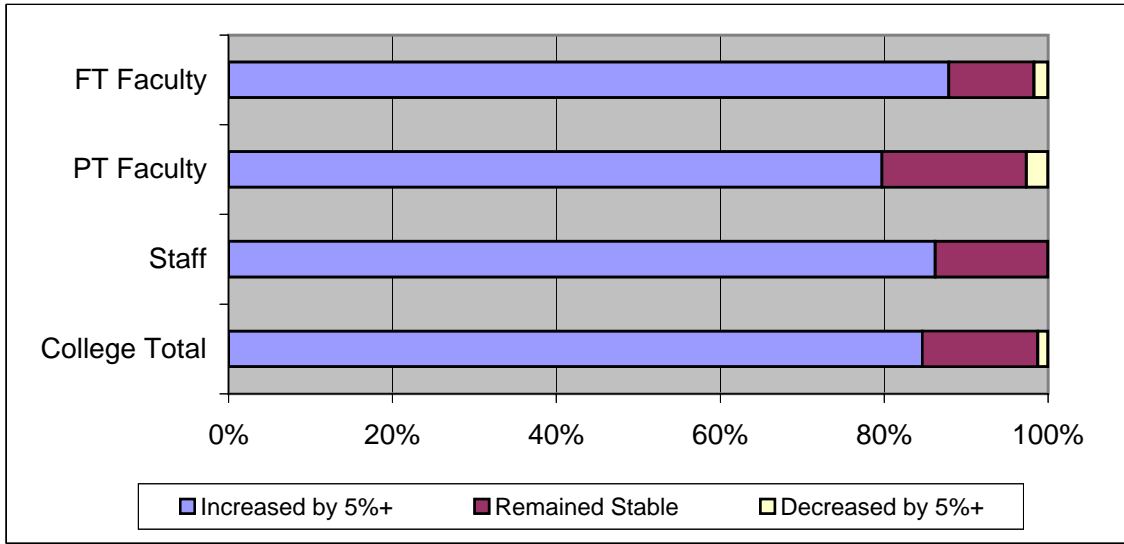


**Section 7 - Institutional Enrollments**

**Question 1: To the best of your knowledge, full-time equivalent enrollments at this institution have.....over the past three years**

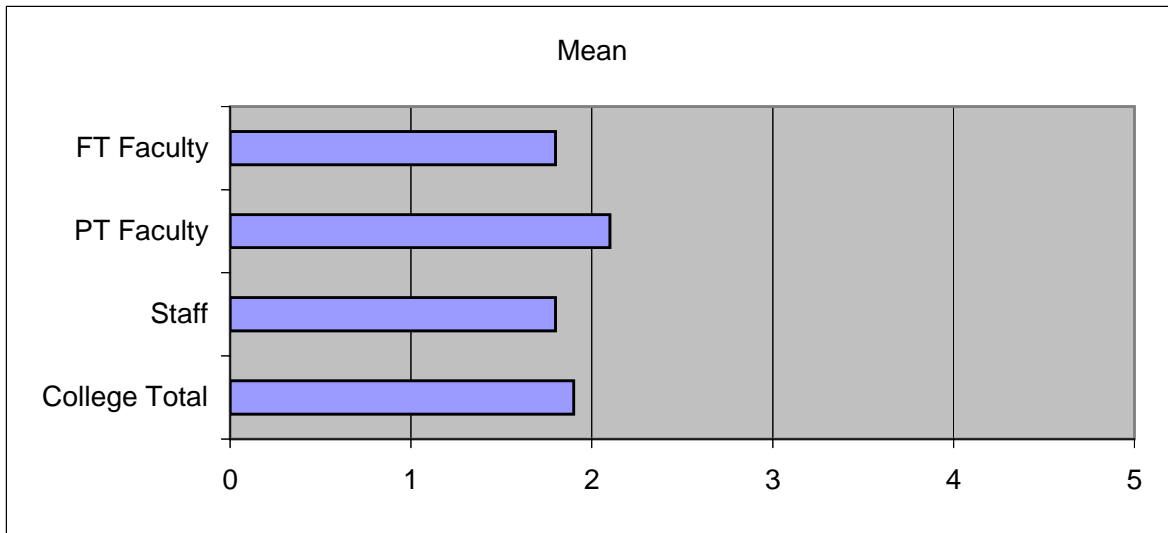
	Increased by 5%+	Remained Stable	Decreased by 5%+
College Total	81.6%	13.6%	1.2%
Staff	83.9%	13.4%	--
PT Faculty	74.7%	16.5%	2.5%
FT Faculty	86.4%	10.2%	1.7%



**Section 7 - Institutional Enrollments**

**Question 2: Decreasing full-time equivalent enrollments are inevitable next year**

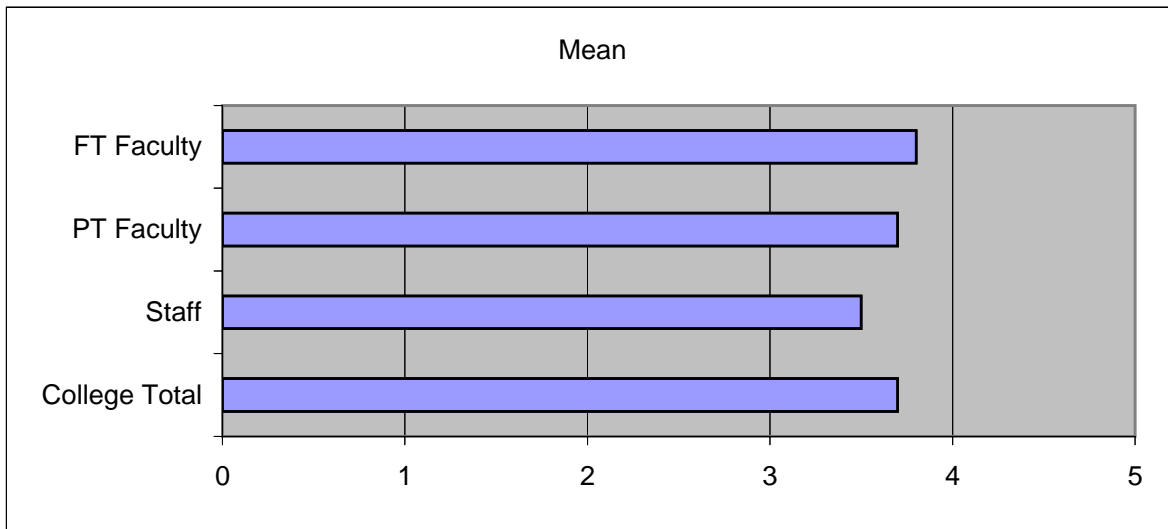
	Mean	1 Strongly Disagree	2 Disagree	3 Neither	4 Agree	5 Strongly Agree	Don't Know
College Total	1.9	22.4%	51.6%	7.2%	2.8%	0.8%	12.4%
Staff	1.8	25.9%	50.9%	4.5%	3.6%	--	11.6%
PT Faculty	2.1	12.7%	54.4%	10.1%	3.8%	1.3%	15.2%
FT Faculty	1.8	28.8%	49.2%	8.5%	--	1.7%	10.2%



**Section 7 - Institutional Enrollments**

**Question 3: There are actions the administration could take now to prevent enrollments from declining in the next year**

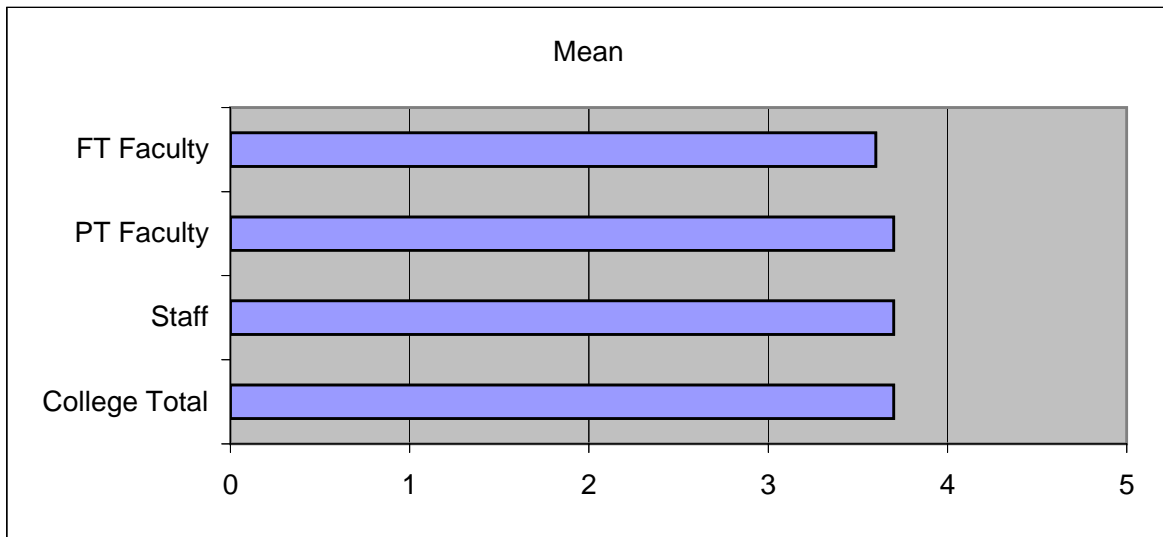
	Mean	1 Strongly Disagree	2 Disagree	3 Neither	4 Agree	5 Strongly Agree	Don't Know
College Total	3.7	0.4%	7.2%	19.2%	48.0%	6.4%	16.8%
Staff	3.5	--	11.6%	18.8%	49.1%	3.6%	14.3%
PT Faculty	3.7	--	3.8%	21.5%	43.0%	8.9%	21.5%
FT Faculty	3.8	1.7%	3.4%	16.9%	52.5%	8.5%	15.3%



**Section 7 - Institutional Enrollments**

**Question 4: Decreasing enrollments next year would be indicative of a short-term, rather than a long-term, problem for our institution**

	Mean	1 Strongly Disagree	2 Disagree	3 Neither	4 Agree	5 Strongly Agree	Don't Know
College Total	3.7	0.4%	11.6%	10.8%	51.6%	7.2%	16.0%
Staff	3.7	0.9%	10.7%	9.8%	51.8%	6.3%	17.9%
PT Faculty	3.7	--	11.4%	8.9%	51.9%	6.3%	19.0%
FT Faculty	3.6	--	13.6%	15.3%	50.8%	10.2%	8.5%



**Section 7 - Institutional Enrollments**

**Question 5: If enrollments were to decrease by more than five percent next year, the viability of our institution would be immediately threatened**

	Mean	1 Strongly Disagree	2 Disagree	3 Neither	4 Agree	5 Strongly Agree	Don't Know
College Total	2.6	10.8%	39.2%	8.4%	15.6%	8.0%	16.0%
Staff	2.7	12.5%	35.7%	7.1%	17.0%	9.8%	15.2%
PT Faculty	2.3	12.7%	45.6%	7.6%	11.4%	2.5%	19.0%
FT Faculty	2.9	5.1%	37.3%	11.9%	18.6%	11.9%	13.6%

