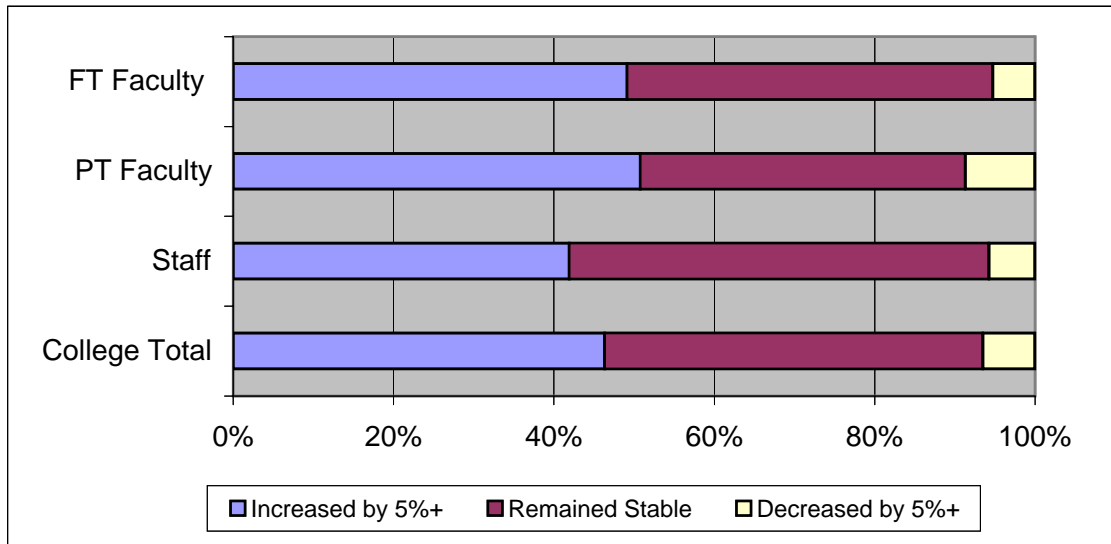


Section 8 - Institutional Revenues

Question 1: To the best of your knowledge, inflation-adjusted total revenues at this institution haveover the past three years

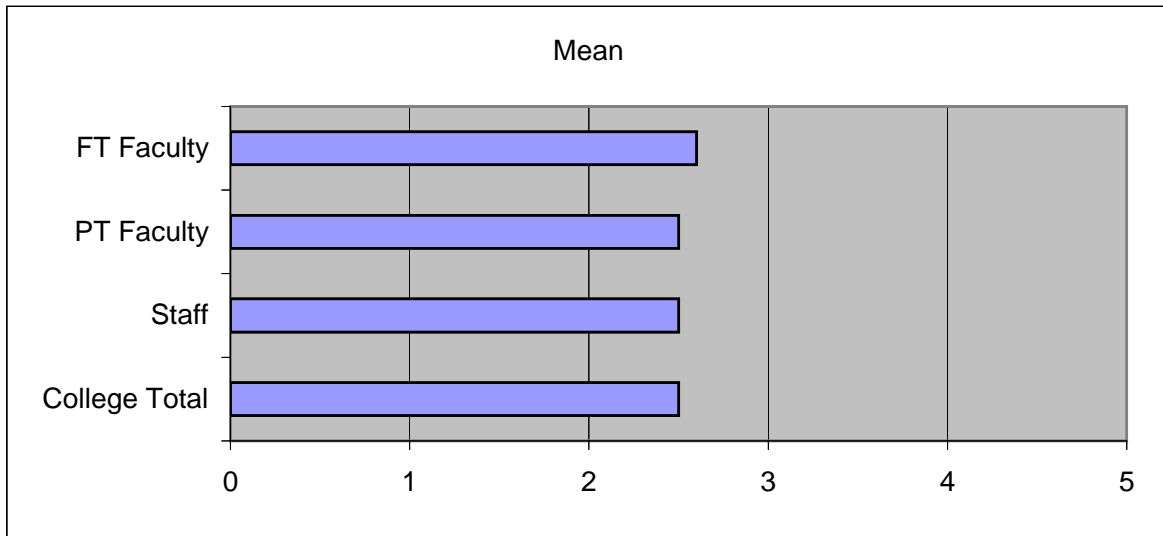
	Increased by 5%+	Remained Stable	Decreased by 5%+
College Total	42.8%	43.6%	6.0%
Staff	39.3%	49.1%	5.4%
PT Faculty	44.3%	35.4%	7.6%
FT Faculty	47.5%	44.1%	5.1%



Section 8 - Institutional Revenues

Question 2: Decreasing inflation-adjusted total revenues are inevitable next year

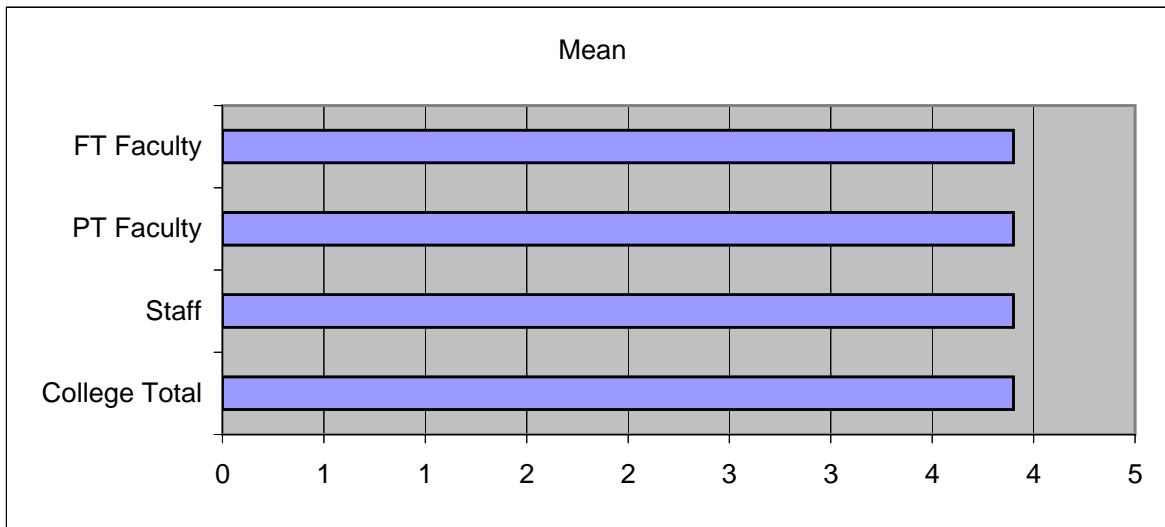
	Mean	1 Strongly Disagree	2 Disagree	3 Neither	4 Agree	5 Strongly Agree	Don't Know
College Total	2.5	5.2%	28.4%	18.0%	9.6%	0.4%	36.0%
Staff	2.5	6.3%	30.4%	17.9%	9.8%	--	33.9%
PT Faculty	2.5	6.3%	21.5%	19.0%	6.3%	1.3%	43.0%
FT Faculty	2.6	1.7%	33.9%	16.9%	13.6%	--	30.5%



Section 8 - Institutional Revenues

Question 3: There are actions the administration could take now to prevent total revenues from declining in the next year

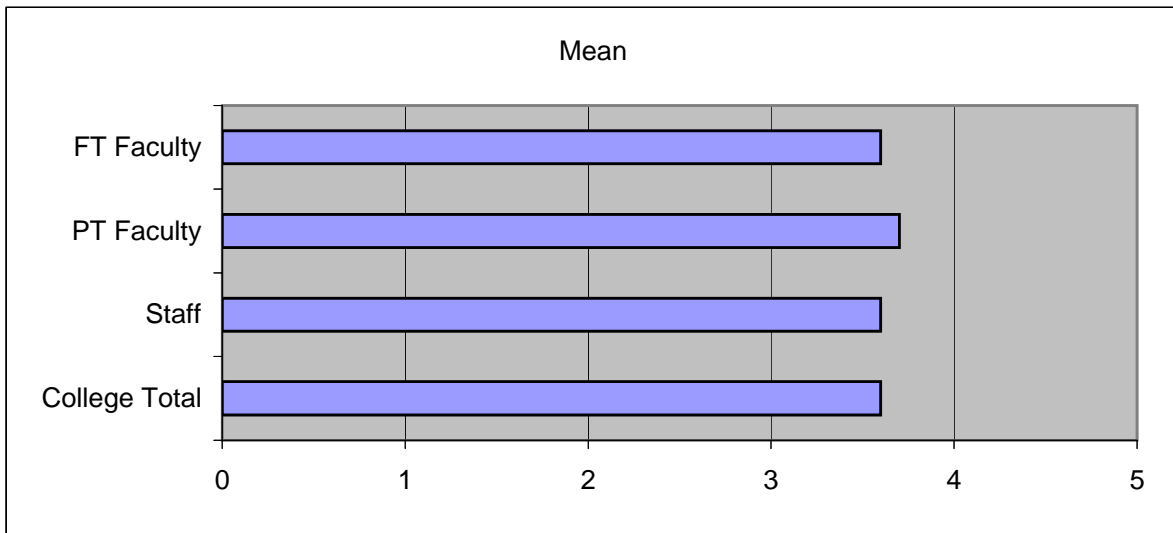
	Mean	1 Strongly Disagree	2 Disagree	3 Neither	4 Agree	5 Strongly Agree	Don't Know
College Total	3.9	2.4%	1.2%	12.4%	54.4%	7.2%	22.4%
Staff	3.9	1.8%	1.8%	14.3%	58.0%	8.0%	16.1%
PT Faculty	3.9	2.5%	--	11.4%	49.4%	5.1%	31.6%
FT Faculty	3.9	3.4%	1.7%	10.2%	54.2%	8.5%	22.0%



Section 8 - Institutional Revenues

Question 4: Decreasing total revenues next year would be indicative of a short-term, rather than a long-term, problem for our institution

	Mean	1 Strongly Disagree	2 Disagree	3 Neither	4 Agree	5 Strongly Agree	Don't Know
College Total	3.6	0.8%	10.0%	12.4%	45.2%	6.0%	23.2%
Staff	3.6	--	13.4%	9.8%	44.6%	5.4%	25.0%
PT Faculty	3.7	--	7.6%	13.9%	43.0%	7.6%	25.3%
FT Faculty	3.6	3.4%	6.8%	15.3%	49.2%	5.1%	16.9%



Section 8 - Institutional Revenues

Question 5: If total revenues were to decrease by more than five percent next year, the viability of the institution would be immediately threatened

	Mean	1 Strongly Disagree	2 Disagree	3 Neither	4 Agree	5 Strongly Agree	Don't Know
College Total	2.8	9.6%	28.8%	10.4%	19.2%	6.4%	23.2%
Staff	2.5	11.6%	25.9%	10.7%	21.4%	7.1%	20.5%
ALL Faculty*	2.8	8.0%	31.2%	10.1%	17.4%	5.8%	25.4%
PT Faculty							
FT Faculty							

* Full- and Part-time breakout was not available on this question.

