

# Spring Term 2012 Catalog Update

## Important Dates

### SPRING TERM

|  |                           |
|--|---------------------------|
| Continuing Student Registration Begins | Tuesday, January 3, 2012  |
| Open Registration Begins               | Saturday, January 7, 2012 |
| Spring Term Begins                     | Monday, January 30, 2012  |

### SPRING TERM *Early Childhood Classes Only*

|  |                           |
|--|---------------------------|
| Continuing Student Registration Begins | Monday, February 27, 2012 |
| Open Registration Begins               | Monday, March 5, 2012     |
| Early Childhood Spring Term Begins     | Monday, March 26, 2012    |

## New For The Spring Term!



### SINGING WITH STYLE

Tuition: \$300 Monday: 6:30 – 8:00pm

From Cole Porter to Kurt Weill, Burt Bacharach to Stephen Sondheim — If these are some of your favorite American songwriters, then check out “Singing With Style”! This will be an introduction to cabaret singing that will include performance and listening to classic cabaret recordings. Students will learn how to personalize their performances by telling

a story, how to work with an accompanist, and how to engage an audience through the spoken word that is the hallmark of this unique genre of vocal performance. The class will culminate with a final performance at Davenport’s Piano Bar and Cabaret (or similar venue).

## Changes For The Spring Term

*Please note that the following classes have changed times for the Spring Term:*

### GROUP PIANO CLASSES

Tuition: \$220 / \$250 for adult level classes

|                                   |                            |
|-----------------------------------|----------------------------|
| Introductory Piano (ages 6 – 8)   | Monday 5:45 – 6:30pm       |
| Introductory Piano (ages 6 – 8)   | Saturday 10:15 – 11:00am   |
| Introductory Piano (ages 9 – 12)  | Monday 7:15 – 8:00pm       |
| Introductory Piano (ages 9 – 12)  | Saturday 12:15am – 1:00pm  |
| Encore Piano (ages 6 – 8)         | Monday 5:00 – 5:45pm       |
| Encore Piano (ages 6 – 8)         | Saturday 9:30 – 10:15am    |
| Encore Piano (ages 9 – 12)        | Monday 6:30 – 7:15pm       |
| Encore Piano (ages 9 – 12)        | Saturday 11:30am – 12:15pm |
| Introductory Piano (ages 13 – 18) | Wednesday 7:45 – 8:30pm    |
| Continuing Piano (ages 13 – 18)   | Wednesday 7:00 – 7:45pm    |
| Introductory Piano (ages 18+)     | Tuesday 7:30 – 8:30pm      |
| Introductory Piano (ages 18+)     | Saturday 2:30 – 3:30pm     |
| Continuing Piano (ages 18+)       | Tuesday 6:30 – 7:30pm      |
| Continuing Piano (ages 18+)       | Saturday 1:30 – 2:30pm     |

*An additional fee of \$15 for lesson books is required for all Introductory classes.*

sherwood

THE COMMUNITY MUSIC SCHOOL at COLUMBIA COLLEGE CHICAGO

## Changes For The Spring Term CONTINUED

### GROUP GUITAR CLASSES

Tuition: \$220 / \$250 for adult level classes

|                                    |                        |
|------------------------------------|------------------------|
| Introductory Guitar (ages 6 – 8)   | Tuesday 5:45 – 6:30pm  |
| Introductory Guitar (ages 6 – 8)   | Saturday 1:45 – 2:30pm |
| Introductory Guitar (ages 9 – 12)  | Tuesday 7:15 – 8:00pm  |
| Introductory Guitar (ages 9 – 12)  | Saturday 5:15 – 6:00pm |
| Encore Guitar (ages 6 – 8)         | Tuesday 5:00 – 5:45pm  |
| Encore Guitar (ages 6 – 8)         | Saturday 1:00 – 1:45pm |
| Encore Guitar (ages 9 – 12)        | Tuesday 6:30 – 7:15pm  |
| Encore Guitar (ages 9 – 12)        | Saturday 4:30 – 5:15pm |
| Introductory Guitar (ages 13 – 18) | Tuesday 8:00 – 8:45pm  |
| Continuing Guitar (ages 13 – 18)   | Tuesday 5:45 – 6:30pm  |
| Introductory Guitar (ages 18+)     | Tuesday 8:00 – 9:00pm  |
| Introductory Guitar (ages 18+)     | Saturday 3:30 – 4:30pm |
| Continuing Guitar (ages 18+)       | Tuesday 7:00 – 8:00pm  |
| Continuing Guitar (ages 18+)       | Saturday 2:30 – 3:30pm |

*An additional fee of \$15 for lesson books is required for all Introductory classes.*

### EXPLORING MUSICAL INSTRUMENTS

**New Time:** Saturday, 2:30 – 3:15pm

*Saturday 12:30pm class time will no longer be offered. All other days and times will stay the same.*

### THE FOLLOWING CLASSES WILL NOT BE OFFERED IN THE SPRING TERM:

- Opera Made Painless
- Guitar Hero
- Sherwood Family Chorus

### PRE-COLLEGIATE SCHOLARSHIP PROGRAM

|                      |                        |
|----------------------|------------------------|
| Application Deadline | Saturday May 5, 2012   |
| Fall 2012 Auditions  | Saturday, May 19, 2012 |



Affordable. Educational. Recreational. Ageless.

PHOTO: BEN REED

# sherwood

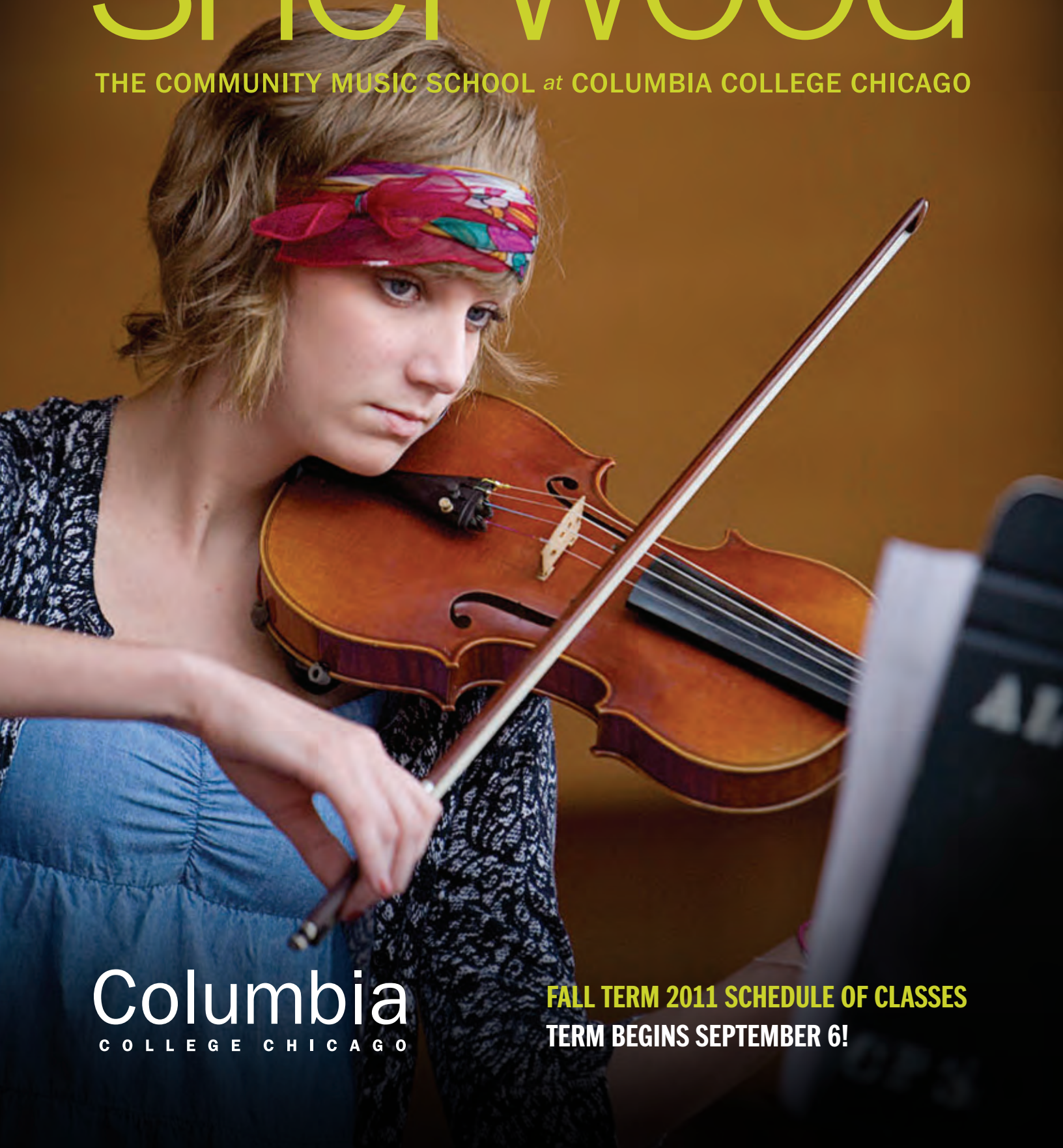
THE COMMUNITY MUSIC SCHOOL at COLUMBIA COLLEGE CHICAGO

1312 S. Michigan Ave. Chicago, IL 60605 | 312.369.3100 | [colum.edu/sherwood](http://colum.edu/sherwood)

Music FOR EVERYONE

# sherwood

THE COMMUNITY MUSIC SCHOOL *at* COLUMBIA COLLEGE CHICAGO



**Columbia**  
COLLEGE CHICAGO

**FALL TERM 2011 SCHEDULE OF CLASSES**  
**TERM BEGINS SEPTEMBER 6!**

# MUSIC FOR EVERYONE AT SHERWOOD

Sherwood, The Community Music School at Columbia College Chicago offers music instruction for all ages. We understand and endorse the value and joy of music education. To that end, we provide high quality music instruction for serious-minded musicians, for those who just want to have fun, and for everyone in between!

## DID YOU KNOW?

Sherwood offers very affordable music lessons. Choose between individual, shared, and group options.

Financial assistance is available for students 18 years of age and younger.

We have online registration! Simply visit [colum.edu/sherwood](http://colum.edu/sherwood) and click on the "Register Online!" button to find what classes are right for you.

**Ensembles and advanced classes are FREE for students taking individual lessons through Sherwood's Pre-Collegiate Certificate Program. See page 10 for more information.**

Affordable. Educational. Recreational. Ageless.



Music FOR EVERYONE



# MUSIC FOR EARLY CHILDHOOD

(BIRTH-AGE 6)



## MUSIC TOGETHER® (birth-age 4)

Music Together® is a music and movement based approach to early childhood development for children ages birth through four years and their parents or primary caregivers. **Tuition: \$225**

Monday: 9:30am, 10:30am, 11:30am, 6:00pm  
Tuesday: 9:30am, 10:30am, 11:30am, 4:00pm, 6:00pm  
Wednesday: 9:30am, 10:30am, 11:30am, 3:00pm, 6:00pm  
Thursday: 9:30am, 10:30am, 11:30am, 6:00pm  
Friday: 9:30am, 10:30am, 11:30am  
Saturday: 9:30am, 10:30am, 11:30am

## MUSIC TOGETHER® FOR BABIES (birth-8 months)

Music Together® for babies is specially designed for the youngest of students. The specifically chosen song activities facilitate the development of your infant's musical growth. **Tuition: \$225**

Tuesday: 2:45pm  
Saturday: 1:30pm

## MUSIC TOGETHER® SPANISH FUSION (birth-age 4)

Spanish Fusion offers the same collection of songs as the Mixed Age Music Together® class, but includes vocabulary and folk songs in the Spanish language. **Tuition: \$225**

Thursday: 9:30am, 10:30am, 3:00pm  
Saturday: 1:30pm

**CALL TODAY TO SCHEDULE A FREE SAMPLE CLASS!**

**MUSIC TOGETHER SIBLING DISCOUNT!**

A second child from the same family may enroll in a Music Together® class for only \$125!



## EXPLORING MUSICAL INSTRUMENTS (ages 3-5)

Exploring Musical Instruments will provide children with their first introduction to the world of musical instruments. Children will learn about different instruments by seeing them, holding them, and hearing how they sound. Each class also includes a crafts portion in which students create real and imagined instruments. **Tuition: \$205**

Tuesday: 5:00pm  
Wednesday: 4:00pm  
Saturday: 12:30pm

## PERCUSSION FOR KIDS (ages 4-6)

Percussion for Kids introduces children to the world of rhythm by learning basic drum technique, playing simple rhythms and learning how to read and write rhythms. Instruction alternates each term between rhythmic percussion (using drum pads and sticks) and melodic percussion (using small xylophones). **Tuition: \$205 (additional \$28 material fee may apply)**

Wednesday: 5:00pm  
Saturday: 9:30am

## FIRST CHORUS (ages 4-6)

Children have fun learning the basics of singing. They will learn music consisting of one-line melodies and simple harmony, as well as how to follow a director, sing with dynamics, and soloing. **Tuition: \$160**

Saturday: 11:30am

## BE THE MUSIC!® (ages 3-6)

BE the Music! is designed to introduce children to fundamental musical concepts through movement and play, something that comes very naturally to them. This unique approach to music education uses kinesthetics allowing kids the opportunity to experience music with their whole bodies. **Tuition: \$205**

Be the Music (ages 3-5)—Thursday, 4:00pm  
Be the Music (ages 3-5)—Saturday, 10:30am  
Be the Music (ages 4-6)—Thursday, 5:00pm  
Be the Music (ages 4-6)—Saturday, 11:30am



\* Classes and prices are for one term; 12 weeks. Fall term early childhood classes begin Sept. 6. All classes are 45 minutes in length. Parent/caregiver attendance is required for all classes. Early Childhood classes run on a different term schedule than other Sherwood programs. Please see page 15 for details.

# SUZUKI INSTRUCTION

(AGES 3+)

Developed by Japanese music educator Shinichi Suzuki, this instrument learning method is designed to teach students as young as three. Participation in Sherwood's Suzuki program requires enrollment in individual lessons *and* group class.

Suzuki Instruction starts at age 3 for violin, viola and cello (at teacher's discretion). Suzuki Instruction starts at age 4 for guitar, harp, flute, and piano. *(New Suzuki String Students must enroll in the Preparatory Program outlined below.)*

| Lesson Length            | Price/Term |
|--------------------------|------------|
| 30 minute lesson + group | \$867      |
| 45 minute lesson + group | \$1054     |
| 60 minute lesson + group | \$1309     |

Please note that Suzuki instruction is for two terms, 34 weeks. Pricing is per term.

## NEW! PREPARATORY STRING PROGRAM

Preparatory String Program is for two terms; 30 weeks. Preparatory String Program classes begin Saturday, Sept. 24.

This program is designed to provide young violin, viola, and cello students with a fundamentally sound music education that incorporates aural training, movement and rhythm training, note reading, technique classes, and ensembles in an age-appropriate setting. All new Suzuki string students are required to enroll in the Preparatory Program, and existing students are strongly encouraged to enroll.

All classes occur on Saturday mornings between 8:30am and 12:30pm. (Individual lesson times may occur any time throughout the week.) For more information about our Preparatory String Program including specific class components for each student level, please visit our website.

CORE COMPONENTS INCLUDE (based on student level)

|                   |  |
|-------------------|--|
| Individual lesson | Group/Technique class                    |
| Performance class | Dalcroze, Singing, or Musicianship class |
| Ensemble          |  |

**Tuition: \$75 + Tuition for Suzuki Instruction/Term**

Saturdays: 8:30am-12:30pm (exact times depend on student level)

Students interested in the Preparatory String Program who are currently taking private lessons outside of Sherwood may enroll in the program for an additional fee. Please call for details.

# MUSIC FOR CHILDREN

(AGES 6-12)

## GROUP PIANO CLASSES

Group piano is an ideal way to try out the piano and build the foundation for continued individual study in piano or other instruments. Encore classes require prior enrollment in an Introductory class or teacher approval. (An additional fee of \$15 for lesson books is required for Introductory classes.)

**Tuition: \$220**

Introductory Piano (ages 6-8)—Monday, 5:00-5:45pm

Introductory Piano (ages 6-8)—Saturday, 9:30-10:15am

Introductory Piano (ages 9-12)—Monday, 6:30-7:15pm

Introductory Piano (ages 9-12)—Saturday, 11:30am-12:15pm

Encore Piano (ages 6-8)—Monday, 5:45-6:30pm

Encore Piano (ages 6-8)—Saturday, 10:15-11:00am

Encore Piano (ages 9-12)—Monday, 7:15-8:00pm

Encore Piano (ages 9-12)—Saturday, 12:15-1:00pm

## GROUP GUITAR CLASSES

Group guitar class is a great way to get introduced to the guitar. Learn chords, strumming patterns, and melodic lines as well as how to play with others in a fun, relaxed setting. Encore classes require prior enrollment in an Introductory class or teacher approval. (An additional fee of \$15 for lesson books is required for Introductory classes.) **Tuition: \$220**

Introductory Guitar (ages 6-8)—Tuesday, 5:00-5:45pm

Introductory Guitar (ages 6-8)—Saturday, 1:00-1:45pm

Introductory Guitar (ages 9-12)—Tuesday, 6:30-7:15pm

Introductory Guitar (ages 9-12)—Saturday, 4:30-5:15pm

Encore Guitar (ages 6-8)—Tuesday, 5:45-6:30pm

Encore Guitar (ages 6-8)—Saturday, 1:45-2:30pm

Encore Guitar (ages 9-12)—Tuesday, 7:15-8:00pm

Encore Guitar (ages 9-12)—Saturday, 5:15-6:00pm

## INTRODUCTORY HARP

Sherwood is the only community music school in Chicago offering instruction on harp. Introductory harp is a great way for young students to become familiar with the harp in a fun and social environment. **Tuition: \$205**

Wednesday: 5:30-6:00pm

## NEW! CHICAGO HARP ENSEMBLE (ages 5-18)

See description under "Music for Young Adults" section.

## GUITAR HERO (ages 9–13)

Students will learn to play songs featured in the Guitar Hero and Rock Band video games from the 1960's through today. Students will also learn techniques used to play electric guitar and work on improving their rhythm skills.

**Tuition: \$150**

Saturday: 12:30–1:15pm

## NEW! SHERWOOD FAMILY CHORUS

Our new Sherwood Family Chorus is a great family activity that everyone can do together - mom, dad, and kids! Enjoy singing together with other neighborhood families in a relaxed social setting while learning new music and improving your vocal chops! **Tuition: \$100/family/year**

Saturday: 12:30–1:30pm

**\*Classes and prices are for one term, 16 weeks, unless otherwise noted. Classes begin the week of Sept. 12.**



# MUSIC FOR YOUNG ADULTS

(AGES 12–18)

## BEGINNING TO INTERMEDIATE CLASSES

Classes and prices are for one term, 16 weeks. Classes begin the week of September 12.

### GROUP PIANO CLASSES

Group piano is an ideal way to try out the piano and build the foundation for continued individual study in piano or other instruments. (An additional fee of \$15 for lesson books is required for the Introductory class.) **Tuition: \$220**

Introductory Piano—Wednesday, 7:00–7:45pm

Continuing Piano—Wednesday, 7:45–8:30pm

### GROUP GUITAR CLASSES

Group guitar class is a great way to get introduced to the guitar. Learn chords, strumming patterns, and melodic lines as well as how to play with others in a fun, relaxed setting. (An additional fee of \$15 for lesson books is required for the Introductory class.) **Tuition: \$220**

Introductory Guitar—Tuesday, 5:45–6:15pm

Continuing Guitar—Tuesday, 8:00–8:45pm

### SING OUT!

This is a great class for teenagers who love to sing and want to train their voice in a fun and supportive environment. **Tuition: \$200**

Saturday: 2:30–3:30

---

## INTERMEDIATE TO ADVANCED CLASSES

Classes run for two terms, 32 weeks. Pricing is per term. Classes begin the week of Sept. 12. Students enrolling in Intermediate to Advanced classes are strongly encouraged to audition for the Pre-Collegiate Certificate Program.

## MUSICIANSHIP

Sherwood's Musicianship classes are designed to create a fully integrated musician, and are comprised of ear training/sight-singing, music theory, analysis, music history, class performance/improvisation and experience with various musical genres. **Tuition: \$280**

Day & time by arrangement based on student's level

## JAZZ IMPROVISATION

This class is designed to introduce students to the great American art form of Jazz. Open to students who have played their instrument for at least two years and are currently taking individual lessons. **Tuition: \$250**

Day & time by arrangement

## INTERMEDIATE TO ADVANCED ENSEMBLES

Ensembles run for two terms, 32 weeks. Pricing is per term. Ensembles begin the week of September 12. A placement audition is required for all ensembles. Students enrolling in Intermediate to Advanced ensembles are strongly encouraged to audition for the Pre-Collegiate Certificate Program.

## SHERWOOD HONORS ENSEMBLES

Sherwood is pleased to provide tuition-free opportunities for some of its advanced students. Each year by audition, students are selected for several tuition-free honors ensembles.

## NEW! CHICAGO HARP ENSEMBLE (ages 5–18)

The Chicago Harp Ensemble provides vital ensemble training to harpists of all ages, skill level, and harp type striving to improve their overall rhythm, musicianship and listening skills. An enriching opportunity for all harp students, participation in an ensemble will help build and foster a supportive community of harpists. Marguerite Lynn Williams, Director of the Chicago Harp Ensemble and Janelle Lake, Assistant Director. An audition is required for new members. **Tuition: \$220 (10 weeks)**

Advanced Ensemble—Saturday, 9:00–10:00am

Intermediate Ensemble—Saturday, 10:00–11:00am

Beginner Ensemble—Saturday, 11:00am–12:00pm

## CHAMBER ENSEMBLES

Participation in a Chamber Ensemble provides students the opportunity to collaborate and perform with other like-minded young musicians in small groups. Chamber Ensembles are formed based on age, level and instrumentation. **Tuition: \$450**

Day & time by arrangement

## JAZZ COMBOS

Jazz Combo is an excellent medium for those interested in studying this great American art form. Combos are formed based on similar playing ability and age, and students should have basic instrumental competency and must be taking individual lessons. **Tuition: \$375**

Day & time by arrangement

## PERCUSSION ENSEMBLE

Under the instruction of Columbia College's percussion instructor, students will rehearse weekly learning music specifically written for percussion ensemble. **Tuition: \$250**

Thursday: 6:30–7:30pm

## PRE-COLLEGIATE CERTIFICATE PROGRAM (ADVANCED INSTRUCTION)

Sherwood's Pre-Collegiate Program provides accelerated training for talented young musicians. The comprehensive six-level Certificate Program allows middle and high school students an opportunity to work at their own pace while providing them with the skills needed to gain acceptance into major universities and conservatories across the country. The program is tailored to the skill level of each individual student and is open to students trained in either classical or jazz mediums. Students gain admittance into the Pre-Collegiate Program through an audition. Financial aid is available for students enrolled in the Pre-Collegiate program.

### Program Weekly Components:

- Individual Lesson
- Elective(s)
- Musicianship
- Recital Attendance
- Ensemble(s)

**Fall 2011 Audition Date: August 20, 2011**  
(application deadline: July 30)

For more information about Sherwood's Pre-Collegiate Certificate Program and to register for an audition, **visit [colum.edu/Sherwood](http://colum.edu/Sherwood)**.

\* Beginning Fall 2011, students admitted into Sherwood's Pre-Collegiate Program receive FREE group classes and ensemble instruction. All Pre-Collegiate Students are required to be enrolled in 60-minute lessons. Students who receive Individual Instruction outside of Sherwood are required to pay an enrollment fee of \$400 per term.

# MUSIC FOR ADULTS

(AGES 18+)

## GROUP PIANO CLASSES

Group piano is an ideal way to try out the piano and build the foundation for continued individual study in piano or other instruments. (An additional fee of \$15 for lesson book is required for the Introductory Class.) **Tuition: \$250**

Introductory Piano—Tuesday, 6:30–7:30pm

Introductory Piano—Saturday, 1:30–2:30pm

Continuing Piano—Tuesday, 7:30–8:30pm

Continuing Piano—Saturday, 2:30–3:30pm

## GROUP GUITAR CLASSES

Group guitar class is a great way to get introduced to the guitar and learn chords, strumming patterns, and melodic lines as well as how to play with others in a fun, relaxed setting. (An additional fee of \$15 for lesson book is required for the Introductory Class.) **Tuition: \$250**

Introductory Guitar—Tuesday, 7:00–8:00pm

Introductory Guitar—Saturday, 2:30–3:30pm

Continuing Guitar—Tuesday, 8:00–9:00pm

Continuing Guitar—Saturday, 3:30–4:30pm

## MEET THE HARP

Sherwood is the only community music school in Chicago offering instruction on harp. Join Janelle Lake as she provides a hands-on experience with the harp. **Tuition: \$220**

Wednesday: 7:15–8:00pm

## MUSIC IN MOTION<sup>®</sup>

Music in Motion is a unique approach to music education that uses kinesthetics to allow us to experience music with our whole bodies. The students will learn to combine music and movement in order to develop rhythmic unity between the eye, ear, mind and body. **Tuition: \$250**

Wednesday: 7:30–8:30pm

## SING OUT!

This is a great class for adults who love to sing and want to train their voice in a fun and supportive environment. **Tuition: \$200**

Saturday: 1:30–2:30pm

\* Classes and prices are for one term, 16 weeks, unless otherwise noted.

\* Classes begin the week of Sept. 12.

## NEW! OPERA MADE PAINLESS

Join operatic vocal coach and master teacher Beth Parker for an exploration of opera topics through the lens of the Metropolitan Opera's captivating Live in HD broadcasts. Participants will learn about opera history and terminology as well as attend live HD broadcasts at the ICON Showplace Movie Theater. (Classes meet for 12 weeks beginning the week of Sept. 19. Additional fee to attend broadcasts not included in tuition price.) Participants need not attend all HD broadcasts in order to enroll. **Tuition: \$200**

Thursday: 7:00–8:30pm

## ADULT CHAMBER ENSEMBLE

This is an excellent introduction to chamber music repertoire and rehearsal/performance techniques for students at intermediate through advanced levels. Students with at least two years of private study will learn to play within numerous instrumental combinations. An audition will be held during the first week of class to determine placement in groups. **Tuition: \$390/Term (This ensemble runs for two terms, 32 weeks.)**

Tuesday: 6:00–8:00pm

## COMMUNITY ENSEMBLES

Community Ensembles run for two terms. Tuition prices are for the full year.

### COLUMBIA COMMUNITY CHORUS

The Chorus provides a fun and relaxed opportunity to experience the joy of singing with others. Members learn a variety of choral literature, with emphasis on healthy tone production, blend, musicianship and the importance of ensemble. (The Community Chorus runs for 30 weeks and follows the Columbia College academic calendar.) **Tuition: \$100**

Wednesday: 7:00–8:30pm

### NEW! SHERWOOD FAMILY CHORUS

See description under 'classes for children'.

# INDIVIDUAL LESSONS

(AGES 4+)

Lessons are offered Monday through Saturday at times mutually agreed upon by the student and instructor. Sherwood's Program Coordinators will help you decide on lesson length and will match the best teacher to your needs. Lessons are offered in traditional and jazz instruction for the following instruments:

| String Instruments           | Wind Instruments | Other                 |
|------------------------------|------------------|-----------------------|
| Violin                       | Flute            | Piano                 |
| Viola                        | Oboe             | Voice                 |
| Cello                        | Bassoon          | Percussion & drum set |
| Bass (upright & electric)    | Clarinet         | Composition           |
| Guitar (acoustic & electric) | Saxophone        | Jazz Improvisation    |
| Harp                         | French horn      |                       |
|                              | Trumpet          |                       |
|                              | Trombone/Tuba    |                       |

| Lesson Length | Tuition/Lesson | Tuition/Term |
|---------------|----------------|--------------|
| 30 minutes    | \$40           | \$680        |
| 45 minutes    | \$55           | \$935        |
| 60 minutes    | \$70           | \$1190       |



## NEW! SHARED LESSONS

Are you and a friend interested in learning an instrument together? Sherwood is now offering shared lessons for 2 or 3 students at a time. Prices for shared lessons are the same as for private lessons, so shared lessons are an economical way to learn a new instrument in a fun, social environment. Pre-formed groups only please, Sherwood will not match up individual students to form shared lessons.

## SEASON PASS

Continuing individual lesson students may opt for the Season Pass option. Students enrolled in the Season Pass must commit to and make a payment for a full year of lessons by the season pass deadline of August 1, 2011. In return, students will receive a \$75 discount as well as discounted tickets to "Sherwood Presents" concerts. Please see our website for more details on the Season Pass option.

## ENRICHMENT ENSEMBLES

Ensemble performance is a vital component in developing solid musicianship skills, and it's a great way to meet new people who love music just like you! Choose from among the following ensembles listed elsewhere in this brochure:

### Ensembles for Children

Beginning Orchestra

Junior Orchestra

Chamber Ensembles

Harp Ensemble

### Ensembles for Young Adults

Chamber Ensembles

Jazz Combos

Percussion Ensemble

### Ensembles for Adults

Adult Chamber Ensemble

Columbia Community  
Symphony Orchestra

Columbia Community

Chorus

### Ensembles for Everyone

Sherwood Family Chorus

**\* Individual lessons are for two terms, 34 weeks. Prices are per term. Individual lessons begin the week of Sept. 6.**



## HOW TO REGISTER

Students may register for classes and lessons at Sherwood in three ways:

**Online:** Visit our website at [colum.edu/sherwood](http://colum.edu/sherwood) to register online and pay by credit card. Click on the large "Register Online!" button on our home page to visit our online registration center.

**Phone:** Call our registration desk at 312.369.3100 during regular business hours to speak with a Program Coordinator to register and pay by credit card.

**In Person:** Stop by Sherwood anytime during regular business hours to speak with a Program Coordinator to enroll and pay by cash, check, or credit card.

## PAYMENT

Students must register prior to attending class or lessons, and payment in full is expected at time of registration. Students unable to pay in full may select to participate in the installment plan option. Please check the 'registration' page of our website for details on the installment plan.

## FINANCIAL AID

Sherwood offers need-based financial aid to students less than 18 years of age. For more information about our financial aid program, and to download a financial aid application, visit our website at [colum.edu/Sherwood](http://colum.edu/Sherwood).

**For complete registration policies and procedures including payment policy, fees, discounts, make-up classes, cancellations, class withdrawals, refunds, and credits, visit our website at [colum.edu/sherwood](http://colum.edu/sherwood).**

## BUILDING HOURS

MON-FRI 8:00am-10:00pm  
SAT 7:30am-6:00pm  
SUN Closed

## OFFICE HOURS

MON 9:00am-7:00pm  
TUES-THURS 9:00am-8:00pm  
FRI 9:00am-6:00pm  
SAT 8:00am-6:00pm  
SUN Closed

## IMPORTANT DATES

### Fall Term Dates

Season Pass Pre-Registration Deadline: August 1, 2011

Priority Registration (for continuing students only): August 6-August 14, 2011

Open Registration: Begins August 15, 2011

Individual lessons, Suzuki lessons & Early Childhood classes: Begin Tuesday, Sept. 6, 2011

Group classes & ensembles for Suzuki, children, young adults, and adults: Begin Monday, Sept. 12, 2011

Preparatory String Program classes: Begin Saturday, September 24, 2011

### Winter Term Dates (for Early Childhood classes only)

Priority Registration (for continuing students only): November 14-November 20, 2011

Open Registration: Begins November 21, 2011

Early Childhood Winter Term: Begins December 12, 2011

### Make Up Weeks

Fall Term Make-up week: January 23-January 28, 2012

Fall Term Make-up week (Early Childhood classes only): December 5-10, 2011

Winter Term Make-up week (Early Childhood classes only): March 19-March 24, 2012

### Fall Term School Closings

Labor Day: Monday, Sept. 5, 2011

Thanksgiving: Thursday, November 24-Saturday, November 26, 2011

Winter Break: Saturday, December 24, 2011-Monday, January 2, 2012

Martin Luther King Day: Monday, January 16, 2012



This program is partially supported by a grant from the Illinois Arts Council.

# sherwood

THE COMMUNITY MUSIC SCHOOL at COLUMBIA COLLEGE CHICAGO

1312 S. Michigan Ave., Chicago, IL 60605

312.369.3100 [colum.edu/sherwood](http://colum.edu/sherwood)

create...  
change



Photo by Jacob Boll ('12)

**SHERWOOD OPEN HOUSE!**  
**SATURDAY, AUGUST 6**  
**9:00AM-2:00PM**

---

For more information about Sherwood, including comprehensive class information, visit our website at [colum.edu/sherwood](http://colum.edu/sherwood)

**Columbia**  
COLLEGE CHICAGO