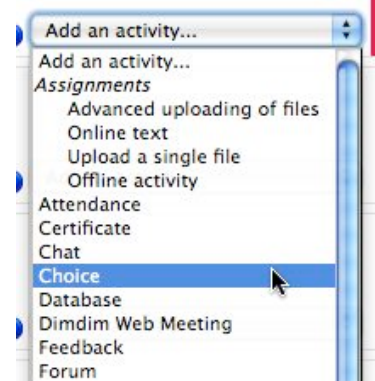


Creating a Choice Assignment

1. Log into your Moodle Class and turn on Editing
2. Select the correct week or topic. Use the pull-down Add an Activity menu to select Choice.



3. Type in the name of the Choice and the text prompt for the Choice Activity.

Adding a new Choice to week 2

General

Choice name* Which Chicago Sports Team do you like best?

Choice text* ?

Trebuchet 1 (8 pt) Lang B I U S

Please select your favorite Chicago Sports team

Path: body

Format HTML format

Limit

Limit the number of responses allowed Disable

You can limit the number of people who can select each option. This is convenient if you are asking people to sign up for groups for example

Choice 1

Choice Bears

Limit 0


Choice 2

Choice Bulls

Limit 0


4. Type in the Choice answers. If you need you can add more fields to the form.

Choice 1

Choice  Bears


Limit 0

Choice 2

Choice  Bulls


Limit 0

Choice 3

Choice  Cubs


Limit 0

Choice 4

Choice  White Sox

Limit 0


Choice 5

Choice  Blackhawks

Limit 0

[Add 3 fields to form](#)

Restrict answering to this time period

Restrict answering to this time period 

Open 28 September 2009 13

55

5. Complete the rest of the settings:

- You can set a start and end date that the activity will be available
- Adjust the display mode (if you have lot's of choices and text, vertical mode is easier to read)
- Determine who can see the results and when they can see them - this determines if students will be able to see the results of the choice activity and if they can see the results immediately or after the close date of the activity
- Privacy of results. If you allow students to view the results will they see each other's names or will the results be anonymous
- Determine if the choice vote can be updated or not
- Set Group Mode settings as appropriate

6. Finally - don't forget to save the Choice Activity



Save and return to course Save and display Cancel

There are required fields in t